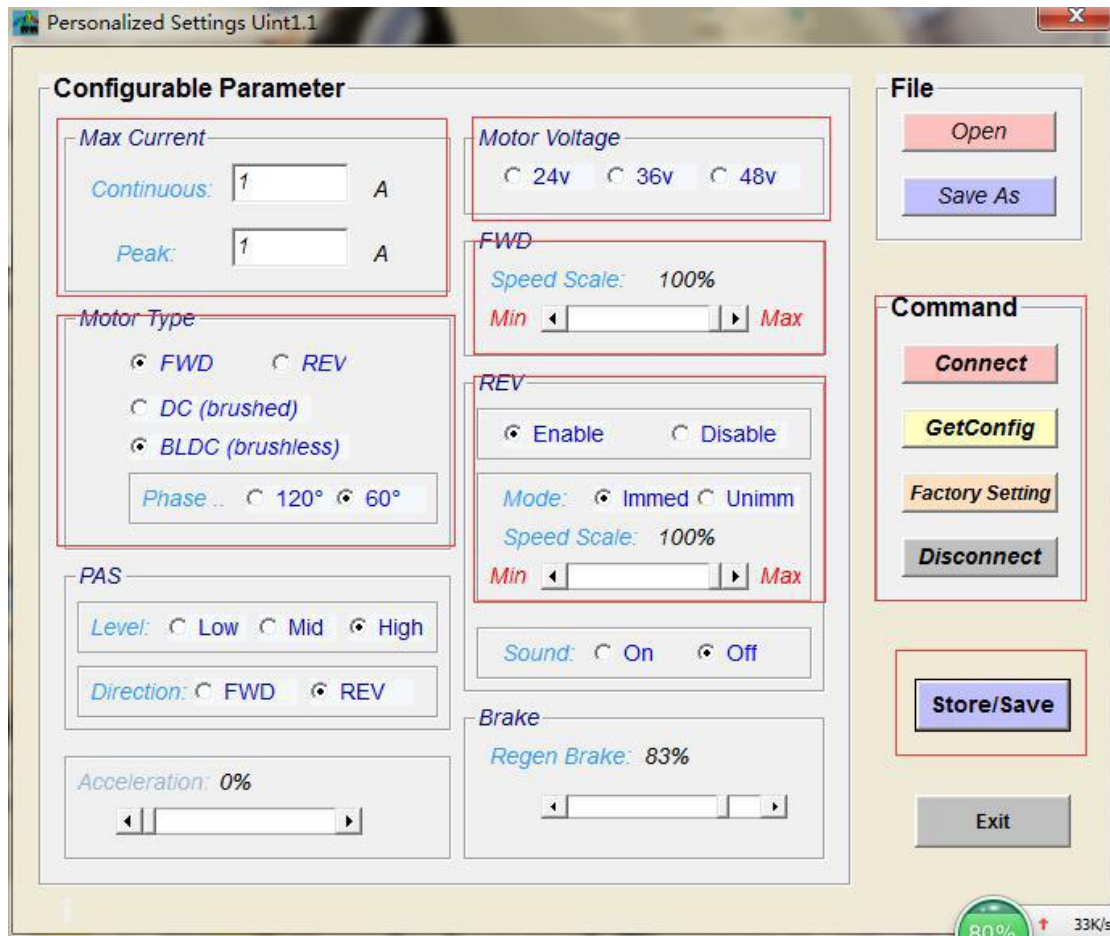


This is for MX-S(M)-SW series controllers, which is square wave controller, voltage from 24V-48V or 24V-60V.

After installation of the programming software, and run the software, you may get a window similar to the following image:



1. connect the controller to windows pc via the programming USB cable, and run the software, you will see a similar software window as the above image.
2. Connect the controller to software buy connect the command column button Connect, on the left bottom you may see a message of "connect success", some time it does show, just forget it and go to next step 3.
3. Connect the command column button GetConfig, the controller setting will be download to the window and you can also see the "getconfig success"
4. Now you can change the setting data as per you request: like current, voltage, speed, motor runing direction and so on.
5. After the reset is finished, connect the store/save button and the data will be written to the controller. Close the window or Exit button and finish the programming.

Special explain the voltage option for 60v controller. If you select 24v, the controller will work with 24v to 60v battery, if you choose 36v, the controller will work with 36v to 60v battery, and if you choose 48v, the controller will work with 48v to 60v battery.

FWD REV can change the motor default rotation direction.